



SEAL:

LANDSCAPE ARCHITECT: Raymond Jungles

REGISTRATION No. RLA-0856

Scale: 1" = 20'
 Drawn By: DT+JM
 Checked By: .
 SHEET NUMBER:

LR-00

[illegible]

LANDSCAPE ARCHITECT: Raymond Jungles

REGISTRATION No. RLA-0856

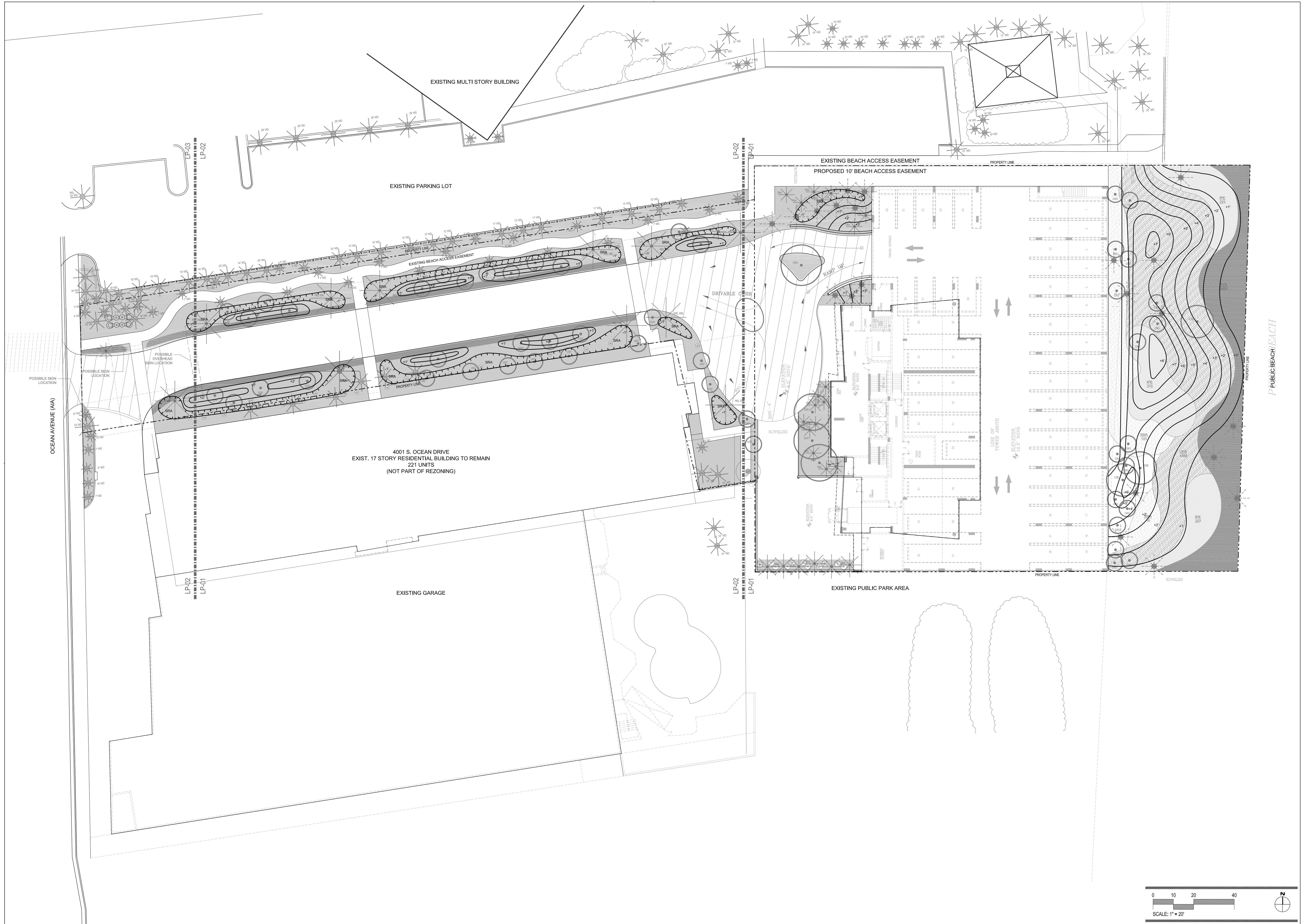
SHEET TITLE:

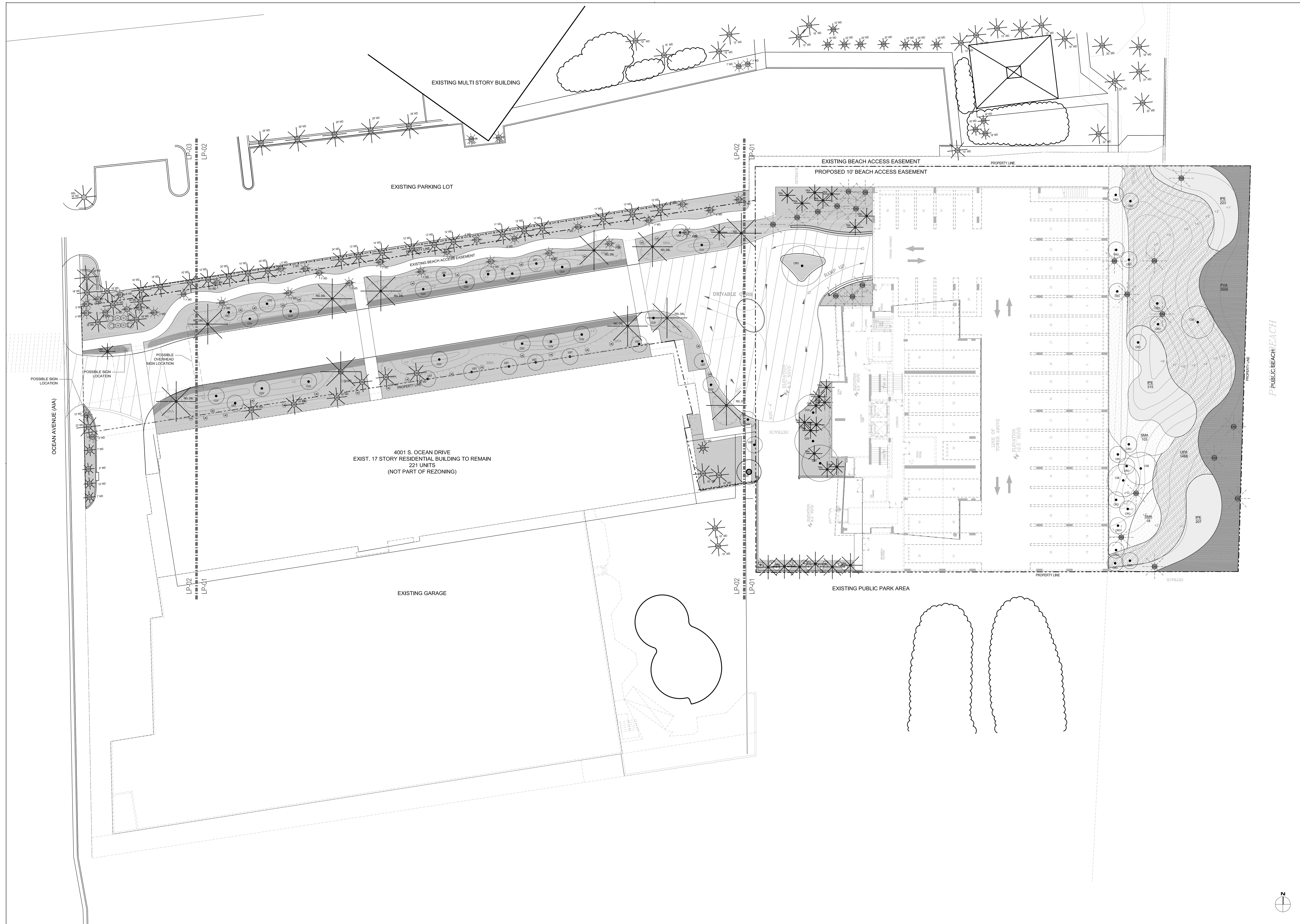
GRADING PLAN
OVERALL

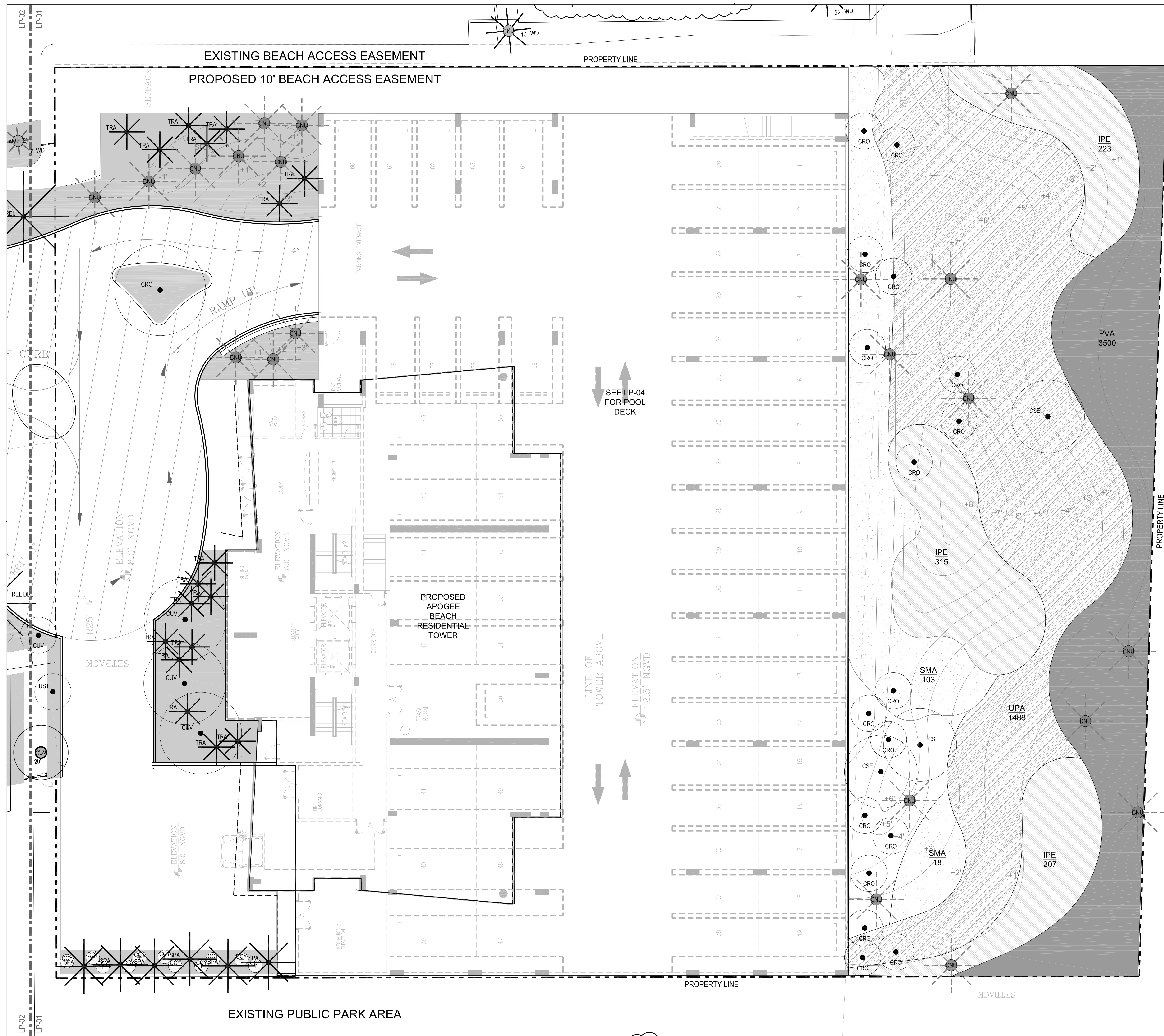
Scale: 1" = 20'
 Drawn By: DT+JM
 Checked By: .

SHEET NUMBER:

LG-00












LEGEND

GENERAL NOTES

1. FOR ALL PROPOSED PLANT MATERIAL SEE PLANT LIST ON LP-05
2. ALL QUANTITIES IN PLANT MATERIAL SHALL BE VERIFIED BY THE LANDSCAPE ARCHITECT UPON DELIVERY. ANY QUANTITIES IN PLANT MATERIAL THAT ARE NOT USED SHALL BE CREDITED BACK TO THE OWNER OR PLACED ELSEWHERE ON SITE BY THE LANDSCAPE ARCHITECT
3. FINAL LOCATION OF PLANT MATERIALS TO BE LAID OUT BY LANDSCAPE ARCHITECT.
4. PROVIDE FOR 100% IRRIGATION COVERAGE OF ALL PLANT MATERIALS
5. NATIVE PLANTS MUST COMPRISE 60% OF TOTAL PLANTING AREA AND NATIVE SHRUBS MUST COMPRISE 40% OF TOTAL PLANTING AREA.
6. TOTAL LANDSCAPED AREA COMPRISES 66% OF SITE.

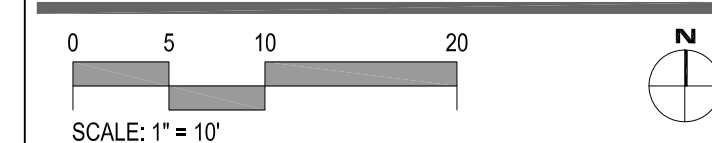
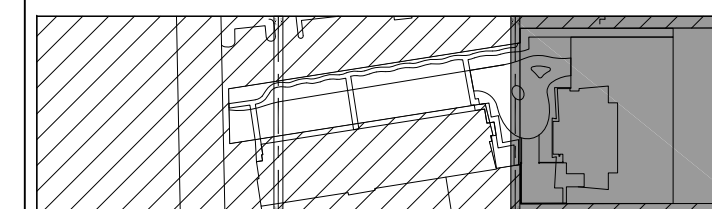
GROUND COVER KEY:

	PASPALUM GRASS
	NATIVE GROUND COVER TO BE DETERMINED
	BAY CEDAR
	SEA OATS
	RAILROAD VINE

PLANT SYMBOL KEY:

	TREES	PALMS	SHRUBS
PROPOSED			
EXISTING TO REMAIN			
RELOCATED			

KEY PLAN:



JUNGLES
RAYMOND JUNGLES INC.
Landscape Architect FASLA

242 SW 5th Street, Miami, FL 33130
PH 305.858.6777 FAX 305.856.0742
www.raymondjungles.com

PROJECT NO. : 10056

Related International
**APOGEE
BEACH**
4053 South Surf Road, Hollywood, Florida

REVISIONS:

[illegible]

LANDSCAPE ARCHITECT: Raymond Jungles

REGISTRATION No. RLA-0856

SHEET TITLE:

PLANTING PLAN

Scale: 1" = 10'
 Drawn By: DT+JM
 Checked By:






SHEET NUMBER:

LP-01

Related International
APOGEE
BEACH

[illegible]

- REGISTRATION No. RLA-0856
-
- SHEET TITLE:
- PLANTING PLAN
-
- Scale: 1" = 10'
- Drawn By: DT+JM
- Checked By: .
-
- SHEET NUMBER:
- LP-02**

	PASPALUM GRASS
	NATIVE GROUND COVER TO BE DETERMINED
	BAY CEDAR
	SEA OATS
	RAILROAD VINE






	TREES	PALMS	SHRUBS
PROPOSED			
EXISTING TO REMAIN			
RELOCATED			



4001 S. OCEAN DRIVE
EXIST. 17 STORY RESIDENTIAL BUILDING TO REMAIN
221 UNITS
(NOT PART OF REZONING)

EXISTING GARAGE

1. FOR ALL PROPOSED PLANT MATERIAL SEE PLANT LIST ON LP-05
2. ALL QUANTITIES IN PLANT MATERIAL SHALL BE VERIFIED BY THE LANDSCAPE ARCHITECT UPON DELIVERY. ANY QUANTITIES IN PLANT MATERIAL THAT ARE NOT USED SHALL BE CREDITED BACK TO THE OWNER OR PLACED ELSEWHERE ON SITE BY THE LANDSCAPE ARCHITECT
3. FINAL LOCATION OF PLANT MATERIALS TO BE LAID OUT BY LANDSCAPE ARCHITECT.
4. PROVIDE FOR 100% IRRIGATION COVERAGE OF ALL PLANT MATERIALS
5. NATIVE PLANTS MUST COMPRISE 60% OF TOTAL PLANTING AREA AND NATIVE SHUBS MUST COMPRISE 40% OF TOTAL PLANTING AREA.
6. TOTAL LANDSCAPED AREA COMPRISES 66% OF SITE.

	PASPALUM GRASS
	NATIVE GROUND COVER TO BE DETERMINED
	BAY CEDAR
	SEA OATS
	RAILROAD VINE

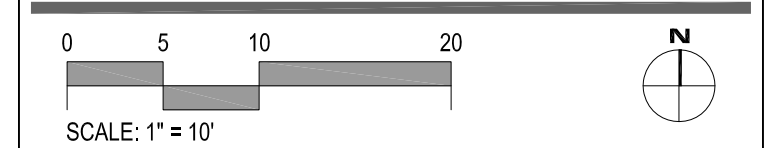
	TREES	PALMS	SHRUBS
PROPOSED			
EXISTING TO REMAIN			
RELOCATED			

GENERAL NOTES:

- GROUND COVER KEY:

- PLANT SYMBOL KEY:

- KEY PLAN:**



PLANT LISTS

APOGEE BEACH CLUB

PLANT LIST - GROUND LEVEL

*Landscape contractor to provide photographs of all trees & palms for Landscape Architect's approval with bid.
Landscape contractor to coordinate installation with Landscape Architect at least 1 month prior to installation date
All plants to be laid out on site by Landscape Architect.*

Plant list coincides with RJ Drawings dated 11.03.2010

QTY	ABBR.	BOTANICAL NAME	COMMON NAME	SPECIFICATIONS
TREES				
21	CUV	Coccoloba uvifera	Sea Grape	(17) 8' Sp., (3) 18' Sp., (1) Existing
3	CSE	Cordia sebestena	Orange Geiger	25' Ht.
18	CRO	Clusia rosea	Autograph Tree	(1) Specimen To Be Selected by LA 30' + Ht., (17) 10' Ht.
PALMS				
19	AME	Adonidia merrillii	Christmas Palm	(19) Relocated
2	AAL	Archontophoenix alexandrae	Alexandra	(2) Existing
54	CNU	Cocos nucifera	Coconut Palm	(33) Existing, (21) Relocated
4	LCH	Livistona chinensis	Chinese Fan Palm	(4) Existing
11	PRO	Phoenix roebelinii	Pygmy Date Palm	(10) Existing
13	REL	Roystonea elata	Florida Royal Palm	(2) Existing, (9) Double Trunk, (1) Single 24' WD (1) Relocated
7	SPA	Sabal palmetto	Sabal Palm	25'-35' WD Staggered Ht. (1) Existing 18' WD
19	TRA	Thrinax radiata	Florida Thatch Palm	10'-20' Ht. Staggered Ht.
UNDERSTORY TREES				
15	UST	Understory Tree	TBD	TBD
33	US	Understory Shrub	TBD	TBD
121	SMA	Suriana maritima	Bay Cedar	Clusters
GROUNDCOVERS				
745	IPE	Ipomoea pes-caprae	Railroad Vine	24" OC
4,777	PVA	Paspalum vaginatum	Seashore paspalum	12" OC
1488	UPA	Uniola paniculata	Sea Oats	24" OC
5,735	NGC	Native Ground Cover	TBD	18" OC

APOGEE BEACH CLUB

PLANT LIST - POOL DECK

Landscape contractor to provide photographs of all trees & palms for Landscape Architect's approval with bid.
Landscape contractor to coordinate installation with Landscape Architect at least 1 month prior to installation date.
All plants to be laid out on site by Landscape Architect.

Plant list coincides with RJ Drawings dated 11.03.2010

QTY	ABBR.	BOTANICAL NAME	COMMON NAME	SPECIFICATIONS
TREES				
9	CUV	Coccoloba uvifera	Sea Grape	Relocated From On-Site
13	CGU	Clusia guttifera	Dwarf	Relocated From On-Site
1	CRO	Clusia rosea	Autograph Tree	(1) Specimen To Be Selected by LA 30' + Ht.
PALMS				
26	TRA	Thrinax radiata	Florida Thatch Palm	10'-20' Ht. Staggered Ht.
GROUNDCOVERS				
387	ELI	Ernodea littoralis	Golden Creeper	18" OC
245	SCO	Seasonal Color	TBD	18" OC
602	SPO	Sesuvium portulacastrum	Sea Purslane	12" OC
1,156	PVA	Paspalum vaginatum	Seashore Paspalum	12" OC
342	UPA	Uniola paniculata	Sea Oats	24" OC

REVISIONS:

[illegible]

LANDSCAPE ARCHITECT: Raymond Jungles

REGISTRATION No. RLA-0856

SHEET TITLE:

PLANT LIST

Scale:
Drawn By: PA
Checked By: DT

SHEET NUMBER

LP-05

1. Landscape contractor shall become familiar with the scope of work as well as the site, digging conditions, and any obstacles prior to submitting a bid.
2. Landscape contractor should verify all estimated quantities of material shown on the Landscape Architect's drawings prior to submitting a bid.
3. Planting plan shall take precedence over plant list in case of discrepancies.
4. All plant material symbols shown on landscape plans shall be considered diagrammatic and should be adjusted on the field by landscape contractor to avoid all utilities and all other obstructions, after consulting the Landscape Architect.
5. All sizes specified for plant material on the plan and plant list shall be considered minimum.
6. All plant material must meet or exceed the specified minimum requirements for both height and spread.
7. Any specific requirements such as specific shape, character, number of tree trunks, plant source, transporting, and or special bracing noted on the plan or plant list, will require approval and or coordination with the Landscape Architect.
8. No change shall be made without prior consent of the Landscape Architect.
9. All material shall be subject to availability at time of installation. Substitutions may be made after consultation with the Landscape Architect
10. All trees, palms, shrubs and ground covers shall be guaranteed for a period of 12 months from date of final acceptance.
11. Changes may occur during the normal course of implementation. Verbal change orders will not be honored. Any changes must be submitted to the Landscape Architect in writing as a change order to be reviewed and approved in writing by owner/client.
12. Landscape contractor shall locate and verify all underground utilities or structures prior to digging. Landscape contractor shall repair all damages to underground utilities, and or construction caused by landscape installation, at no cost to the owner.
13. Landscape contractor shall coordinate with the general contractor, the removal of all building construction debris and foreign material prior to installation of any plant material.
14. Site preparation should include the eradication and removal of any weeds or grass, removal and clean up of any dead material and rough and finish grading per specs and or landscape plans.
15. For plant material designated to be removed, the entire root system shall be dug and removed from the site.
16. All planting areas shall be excavated to a minimum of 3' for groundcovers and more than 3' for shrubs, trees, and palms, and should receive an 80/20 mix fill soil, or as per specifications.
17. All Plant material shall be Florida No. 1 or better, Florida Department of Agriculture Grades and Standards, Parts I & II, 1975, respectively.
18. All trees shall be staked in a good workmanlike manner. No nail staking permitted. (Refer to bracing notes and planting details)
19. After removal or relocation of existing trees and palms, all remaining holes shall be back filled around and under root ball with washed beach sand. Sod disturbed area, if required. All shrub beds to be installed with washed beach sand. (See spec)
20. All trees, palms, shrubs and ground cover plants shall be fertilized at installation, with long lasting fertilizer, according to manufacturers' recommendations. For Palms and Trees use "Palm Special" (6-12-12), for Shrubs use a (12-6-8), and for Sod use a (20-3-3).
21. All existing plant material shall remain shall be protected during all construction phases. Any plant material scarred or destroyed designated to remain must be replaced at the contractor's expense with similar species size and quality.
22. All existing plant material designated to be stored off-site shall be protected and cared for according to industry standard. Any plant material scarred or destroyed designated to remain must be replaced at the contractor's expense with similar species size and quality.
23. All trees to be relocated will get root pruned 30 days min. (or more if required by the species). Upon relocation, thin out 30% of the relocated trees' canopy.
24. All trees on sod area shall receive a pine needle mulch ring 2' in diameter typical.
25. All planting areas shall be mulched with shredded organic mulch to a minimum of 3"; With the exception of beach planting. Do not use cypress or red mulch.
26. All trees shall have 2" caliper at D.B.H. minimum for a 10' height tree.
27. All 1 gallon material shall have 12" spread minimum, all 3 gallon material to have 20-24" spread minimum.
28. All planting areas within the limits of work shall receive 100% coverage by automatic irrigation system (drip preferred) unless otherwise directed by owner.
29. Landscape contractor to coordinate installation of irrigation system with irrigation contractor. Irrigation time clock to be hard wired on completion - responsibility of irrigation contractor. Landscape contractor shall hand water or arrange for watering during planting until irrigation system is 100% operable. This is the responsibility of the landscape contractor.
30. Landscape Contractor shall coordinate his work with the General Contractor, Irrigation Contractor, and the Electrical Contractor.
31. The landscape contractor shall at all times keep the job site clean and free from accumulation of waste material, debris, and rubbish.

39. These drawings, documents, and all contents are the property of Raymond Jungles Inc. All rights are reserved. Unauthorized use or production, in part or whole, for any purpose is unlawful and prohibited except by express written consent.

1. Choose the correct size and number of stakes and size of hose and wire. Guying shall be completed within 48 hours of planting the tree.
2. Cut lengths of staking hose to extend 2 inches past tree trunk when wrapping around.
3. Space stakes evenly on outside of water ring and drive each firmly into the ground. Stakes should be driven at a 30 degree angle with the point of the stake toward the tree until 4 to 5 inches are left showing.
4. Place the hose around the trunk just above the lowest branch.
5. Thread the wire through the hose and past the stake, allowing approximately 2 feet of each of the two ends beyond the stake before cutting the wire.
6. Twist wire at rubber hose to keep it in place.
7. Pull wire down and wind both ends around stake twice. Twist wire back onto itself to secure it before cutting off the excess.
8. The above procedures are to be followed for each stake, keeping the tree straight at all times.
9. There should be a 1 to 3 inch sway in the tree (the wires should not be pulled tight) for best establishment.
10. Flag the guy wires with surveyor's flagging or approved equal for safety.
11. Any wires are not to be removed until approved by landscape contractor.

